

Kickapoo Valley Reserve FALL UPDATE

Bailout Trail in fall

Kickapoo Valley Reserve

La Farge, WI



DAM²⁰²⁴ TRIATHLON CHALLENGE



PADDLE

PEDAL

RUN

5 OCTOBER 2024

Register Today!



kvr.state.wi.us

INSIDER TOPICS

4 & 5 - EDUCATION CORNER

10 & 11 - PROTECTING THE NIGHT SKY

WHAT'S HAPPENING AT KVR

SEPT 14 | Small Game & Archery Deer Opens
OCT. 4 | 5pm- 8pm Friends of KVR Pasta Supper
OCT 5 | **9am Dam Challenge Triathlon!**
OCT 5 & 6 | Youth Gun Deer
OCT 7 | 9am KRMB Finance Committee Meeting
OCT 10 | 5:30pm Education & Tourism Committee Mtg
OCT 16 | 1pm Driftless Dialogue - Burns and Bees
OCT 18 | Friends of KVR Photo Contest entries due
OCT 19 | 9am Pheasant Season Opens
OCT 19 | 1pm Driftless Dialogue - Burns and Bees
OCT 24 | 6pm KRMB Meeting
OCT 26 | Trapper Education Training
NOV 12 | Land Management Committee Meeting
NOV 15 | Equestrian and Bike Trails Close for the season
NOV 21 | 6pm KRMB Meeting
NOV 23-DEC 1 | Gun Deer Season
NOV 28 | Visitor Center Closed
DEC 7 | Friends of KVR Holiday Happening
DEC 9 - 12 | Antlerless Gun Deer
DEC 9 | KRMB Finance Committee Meeting
DEC 12 | Education & Tourism Committee Meeting
DEC 19 | **6pm** KRMB Meeting
DEC 24 - 25 | Visitor Center Closed
DEC 31 - JAN 1, 2025 | Visitor Center Closed
JAN 1, 2025 | 2025 Trail Challenge Begins
JAN 1, 2025 - Begin year-long 25th Anniversary Celebrations
JAN 2, 2025 | Creative Communiities Canvases available
JAN 11, 2025 | **WINTER FESTIVAL!**
JAN 11, 2025 | Driftless Dialogue - Raptors
FEB 24, 2024 | Canvases due back to the Visitor Center

DIRECTOR'S DISCOURSE

PRESERVING AND PROTECTING

Signs of the season

Jason Leis - Executive Director



Fall is in the air and my favorite time of year! Some leaves are just beginning to turn. It's a great time of year to be out in nature, to see all the vibrant colors and enjoy some great weather for biking, hiking, horseback riding or whatever you like to do. I encourage you to sign up to race in our Dam Challenge Triathlon or volunteer on October 5th. The event would not happen without our great volunteers!

A popular activity in the fall on the KVR is hunting. Small game and archery deer season have opened and there are some waterfowl seasons open as well. Users should wear bright colors when they are recreating, and hunters must be aware of campsites and trails to ensure the safety of everyone. I've been a hunter's safety instructor for over 20 years and we know practicing the 4 rules of firearm safety will prevent most accidents.

- Treat every firearm as if it were loaded
- Always point your muzzle in a safe direction
- Be sure of your target and what's beyond
- Keep your finger off the trigger until you are ready to shoot.

In addition to the seasons happening now, pheasant season opens on Saturday, October 19th at 9am. This year around 2500 birds will be released throughout the season.

There is again a WiDNR CWD testing kiosk on the KVR. It is located by the Rockton bridge on Hysel Road. Instructions are at the kiosk. Hunters are encouraged to participate in this free testing. A dumpster will be placed at the same location for deer carcasses and will arrive a couple days before the gun deer season opener which is November 23rd. Proper disposal of carcasses until then is at the Vernon County Landfill on County Road LF east of Viroqua.

2025 will mark 25 years of the Kickapoo Valley Reserve with the deed officially transferred from the Federal Government to the State of Wisconsin and Ho Chunk Nation in December of 2000. The KVR's theme for 2025 will honor and celebrate the history of the property. Watch for some great talks throughout the new year. As always, enjoy your time on the KVR and leave it better than you found it.

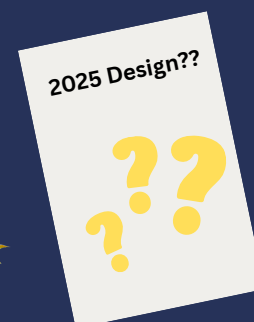
Thank You to these Tree Sponsors



- Louise Muller
- John and Rita Hoffman
- Georgia and Jeff Everson
- Lisa Henner and Tim Hundt
- Friends of KVR Gardeners
- Kolin & Jana Muehlenkamp
- Jodee Dushak

2025 KVR ANNUAL PERMITS WILL BE AVAILABLE BEGINNING IN DECEMBER!

JOIN FRIENDS OF KVR & GET YOUR ANNUAL PERMIT TOO! THE YEAR END MEMBERSHIP DRIVE IS COMING SOON!



WI State Park passes do not apply on the KVR

Employment Opportunities

The Kickapoo Valley Reserve is taking applications for the following positions:

Education Coordinator
Police Officer
Field Crew
Naturalist/Instructors



Learn more about being a part of the team that preserves and protects the Kickapoo Valley Reserve.
<http://kvr.state.wi.us/Get-Involved/Employment-Opportunities>

VOLUNTEER SPOTLIGHT

WE  VOLUNTEERS!

OUR GREAT VOLUNTEERS!

With the many recreational and educational offerings at the KVR, we couldn't do it all without the hard work and giving spirits of our volunteers. With the Annual Dam Challenge upon us, we are happy to highlight STEVE BRANDL who has given many hours and shared his talents often with us!

- ***How long have you been volunteering with the Reserve and what made you decide to help out?*** The KVR as we know it now was just getting its legs when we moved to the area in 1993, it seemed like a great way to meet new people and help a good cause.
- ***Tell us about the values you have that align with the KVR mission.*** I feel that shared outdoor space like the KVR is incredibly important for everyone. Individually, we could never have access to all the opportunities like hiking, kayaking and other outdoor silent sports that the KVR offers us.
- ***What is your favorite event at the Reserve?*** I think it's the Dam Challenge. It's inspiring to watch the participants accomplish a goal they have trained so hard for.
- ***Do you use the Reserve to relax and recreate and if so, how?*** Mostly hiking and kayaking.
- ***What would you like others to know about the Reserve?*** I'm always surprised at the size of the KVR. It's easy to find something new every time you visit.

THANK YOU TO
ALL KVR
VOLUNTEERS!

*We ♥ our
Volunteers*



KVR could use a hand

They say it takes a village. Raising children, supporting community programs and of course hosting the Dam Challenge Triathlon! This long time race at the Kickapoo Valley Reserve simply could not happen without amazing volunteers that set aside the first Saturday in October to battle all weather, temperatures, conditions to help make the race a success. Volunteers are needed on Race Day and at the Friday night Pasta Supper
[Click here for more information](#)

**Volunteers
needed**

You can also reach out to the Visitor Center for more volunteer information. 608-625-2960



EDUCATION FIELD NOTES

WHAT'S NEW

Studying Burns and Bees

by Danae Gardner – KVR Summer Education Intern

Ongoing research supported by a Ralph E Nuzum grant, is taking place on the Kickapoo Valley Reserve that will contribute to a study of the Gratton Lab of UW-Madison. The current researchers, Kristine Schoenecker and Lily Landre visited the KVR in August to survey native bumble bees. Their focus of study is within oak savannahs and woodland sites, areas that are more “woody” rather than prairies. The questions being asked are how controlled burns in oak savannahs and woodlands impact the nesting areas and flower resources of bumble bees and specifically worker and queen—activity. This work is all done in hopes to educate the public on the importance of forests for bumble bees and other pollinators.

The process consisted of monitoring the bumble bees in an unburned parcel of land behind the KVR Visitor Center using transect surveys and nonlethal catch-and-release identification methods. First, they took measurements of the weather, including temperature, wind speed, and cloud cover. Then, they meandered a first sweep down a line of 100 meters in the designated quadrant of the unburned parcel. Their method for observing the bumble bees on the land was to spot them amongst the flowers next to their path, and safely trap them in nets if possible. The bee was then collected inside a small plastic vial for identification. If the bee’s movement was too frantic, they were able place the bee on an ice pack for around 10–20 minutes, allowing the bee to calm down enough for identification.

Once all the needed data was collected, the bee was released! On the second sweep down the same path, Kristine and Lila worked together to identify flowers and vegetation using 20 quadrant measurements every ten meters on the right and the left of their path.

The tallest plant height and flowers present were collected, with hopes that it may give more insight into the vegetation in the plot and how it relates to the bee population and activity in the area, such as bees preferring a certain species or height of plant. The species that were identified during the surveys on the KVR were the Common Eastern, Half-black, Two-spotted, and Rusty Patched Bumble Bees. Yes, you read that correctly, a Rusty Patched Bumble Bee!

These little guys are the only bumble bees in Wisconsin listed as federally endangered. With recent projects of the Pollinator Paragon and pollinator habitat improvement on the property, the sighting of the Rusty Patched bumble bee proves how important native ecosystems and protection are to these hard-working pollinators.

A significant question of this study is whether controlled burns are harmful or beneficial to bumble bees’ habitat. There are arguments that controlled burns, especially during spring, can increase native plants and flower abundance that bees can use later on for nectar and pollen. However, the controlled burns have also been seen as harmful as they can cause bee mortality directly and also destroy the undergrowth bees may use for nesting and foraging. Bumble bees are cavity nesters, meaning they often are found nesting in areas under brush, fallen timber, in rodent burrows, and in grasses. Spring fires may burn off leaf litter and other nest materials on the ground surface, so it’s possible that the lack of vegetation may create a difficult time for newly emerged queen bumble bees, called gynes, to find a habitat to nest in.

Solutions to prevent possibly harming bees with controlled burns could be to do patch burns, or leave small areas of vegetation behind for the bumble bees. Patch burning is using both fire and grazing for landscapes. One section of a landscape is burned, which grazing animals prefer due to the post-fire new plant growth. The unburned patches are left alone by grazers and have more vegetation with higher cover. Grazing isn’t a practice on the KVR, this may be more favorable on private property to aid in bee conservation. Fall burns could also prove to be a good option as they create more plant diversity than spring burns, and they cause less mortalities to new bumble bee queens as they are nesting underground for the winter. Finally, leaving behind areas of vegetation during a burn allows a small habitat in that location in which bumble bees and other wildlife can thrive.

We welcome you to join in on our October 19th Driftless Dialogue to learn more about this study and for education on the importance of forests for bumble bees!



Fall woodland burn along West Ridge Trail to support oak regeneration

EDUCATION FIELD NOTES

SUMMER CAMP REFLECTIONS

That's a wrap!



Natura Nuts Camp - KVR

KVR Summer Adventure Camps provided over 250 youth with expertly guided outdoor experiences this summer. From a bicycle trail camp to the first ever paddling camp, the Kickapoo Valley Reserve was experienced through full nature immersion by the youth who attended. KVR Summer Adventure Camps are for youth ages 2-18. Scholarships are available for those in need. Watch for Summer Camp 2025 registration opening in February 2025.

2024 KVR Summer Camps were generously sponsored by Kwik Trip, Go Macro, Cabelas, Echo, and Friends of Kickapoo Valley Reserve.



Kinder Camp - KVR



Waterways Camp - KVR



Camp Kickapedal - KVR



Leadership Trail Camp - KVR



Black Ghost Fly Fishing Camp - KVR

ON 8600 ACRES

LAND & RECREATION MANAGEMENT

Trail Talk



Featured Trail: **West Ridge Trail**

Trail Adopted by: Available for adoption!

Parking: Parking for West Ridge Trail is near the KVR Maintenance Building on the south end of the property

Trailhead: South off of Corps Road and west at Campsite P - Potts Corners.

Length: 5.09 miles

Uses: Equestrian, bike, hike, snowmobile, snowshoe.

Surface: West Ridge Trail is a natural surface trail with dirt and mowed areas.

Interesting features: West Ridge Trail travels through a variety of ecosystems. Many of which are naturally supporting important or endangered species. Open prairies abundant with native wildflowers and a successful oak regeneration project area are along the West Ridge Trail.

Plant communities: West Ridge Trail travels through a flourishing native grassland and flower prairie and a mixed hardwood forest that towers over forest floor gems. A floodplain forest adds to the experience on the West Ridge Trail, a mycophiles stomping ground.

What not to miss: The West Ridge Trail provides access to rock shelters that hold amazing ice formations in the winter months! The Hanson Hollow spring box is a special treat to thirsty explorers. Be sure to always filter or purify any water source you choose to drink along the trail.



Cream gentian (*Gentiana flava*) along West Ridge Trail



View of Hanson Rock from West Ridge Trail in the fall



Found on West Ridge Trail endangered hairy wild petunia (*Ruellia humilis*)

Kickapoo Valley Reserve Mission

The land in the Kickapoo Valley Reserve shall be protected, preserved, and enhanced so that its unique environmental, scenic, and cultural features provide opportunities for the use and enjoyment of visitors to the Reserve. The Reserve will be promoted as a unique example of the Driftless Area Ecoregion and as a destination for low-impact tourism and education.

Land Acknowledgement Statement

The Kickapoo Reserve Management Board acknowledges that the state and federal lands that comprise the Reserve fall within the ancestral homelands of First Nations people including the Hooçak Nation. We recognize the sovereignty of the Hooçak and other First Nations and will work towards a shared future by continuing to create collaborative opportunities to protect and preserve these lands.

ON 8600 ACRES

AUTUMN PHENOLOGY

What species are blooming & roaming about?

Phenology is ‘the study of appearance’ or the timing of seasonal events in nature.

by Joan Peterson – KVR Master Naturalist

Autumn brings shorter days and cooler temperatures, so many plants, birds, and animals migrate or start to hibernate or go dormant for the approaching winter. Here are some interesting things to look for next time you visit KVR.

PLANTS



JACK IN THE PULPIT (*Arisaema triphyllum*)

Where to find: Look for the shiny bright red cluster of red berries near the ground wooded areas like the Blackhawk Rock Trail. But don't taste the berries – they're poisonous!

Fun fact: The flower has both male and female reproductive organs, and can change its gender from year to year; maybe it should be called “Jack and Jill in the Pulpit” instead



JOE PYE-WEED (*Eutrochium maculatum*)

Where to find: In wet or swampy areas; a large meadow of pink Joe Pye-Weed can be seen along Cty Hwy P near Campsites OO and O.

Fun fact: the plant's name originated from the nickname of Joseph Shauquethqueat, a Mohican chief who lived in New England in the 18th and early 19th centuries. Shauquethqueat was a well-respected herbalist who used the plant to cure a variety of illnesses including typhoid fever. (Adirondack Almanack, June 26, 2020).



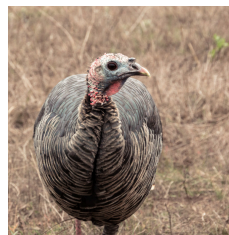
NEW ENGLAND ASTER

(*Symphyotrichum novae-angliae*)

Where to find: This pretty purple plant is a fall favorite. Look for it in the meadows and prairies along Old 131 Trail.

Fun fact: The New England Aster often symbolizes patience, love, and daintiness. They are also seen as a symbol of farewell or parting, making them a thoughtful choice for expressing sentiments of remembrance.

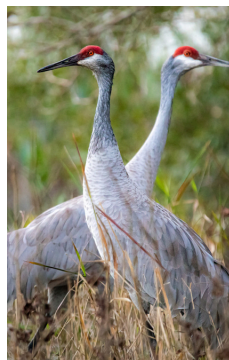
BIRDS



WILD TURKEY (*Meleagris gallopavo*)

Where to find: Turkeys like to forage for seeds and nuts, so they spend time in the open forest. Look for them along the Bailout Trail.

Fun fact: Even though they spend most of the daytime on the ground, these big birds roost in trees at night.



SANDHILL CRANE (*Grus canadensis*)

Where to find: In the fall, cranes often hang out in harvested corn fields. You might see them along Old 131, or in the sky during migration.

Fun Fact: Sandhill cranes were overhunted in the 20th century and were almost eliminated east of the Mississippi. A conservation success story, efforts to help them recover in the past 50 years have increased their numbers to an estimated 1 million birds (US Fish & Wildlife Service, Status and Harvests of Sandhill Cranes 2023)

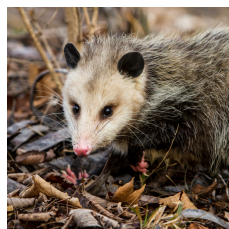


BARRED OWL (*Strix varia*)

Where to find: Since most owls are nocturnal, we don't often see them during the day, although you might hear them call ('who cooks for you? Who cooks for you all?'). They are found in dense coniferous or mixed woods near swamps and rivers. In the KVR, try finding them along....Hoot Owl Trail!

Fun fact: Barred Owl's home territory can reach up to 700 acres.

ANIMALS



OPUSSUM (*Didelphis virginiana*)

Where to find: Opossums are also nocturnal. They mostly live in the forest or near swamps. You might find one along the Little Canada Trail.

Fun fact: Fastidious groomers, a single opossum can eat up to 5,000 ticks a year!



COYOTE

(*Canis latrans*)

Where to find: Coyotes can be found in woodlands and prairies. If you're lucky, you might come across one along the West Ridge Trail.

Fun fact: Coyotes can run up to 43 miles per hour.



BOX ELDER BUG

(*Boisea trivittata*)

Where to find: Near Box Elder trees, of course, or warming themselves on the sides of buildings in autumn. Check out the Visitor Center to see if you can find any.

Fun fact: Box Elder bugs can't chew since they don't have teeth or jaws; instead they slurp up sap and juices from trees and plants.

WHAT'S HAPPENING

LOOKING AHEAD!

2025 Events and Celebrations

The year 2025 will mark the 25th Anniversary of the beginning of the Kickapoo Valley Reserve. We will recognize the hardwork and vision of those who have worked to create what is now a natural and cultural gem, unique to itself and so worthy of the efforts of preserving and protecting.

Join us in 2025 as we look back on 25 years of rich history that brought us where we are today. We will honor the good, recognize the bad, including the healing that has followed, pay homage to all that has come before and work to preserve and protect all that will come to be.

Stay tuned to our calendar of events and watch for celebration details.



Celebrating
— 25 YEARS —

Finding the Rusty Patch Bumble Bee

October 19, 2024 Driftless Dialogue will hear from UW Graduate student researchers who conducted a recent study on the KVR focused on the effects of prescribed burns on bees, specifically bumble bees. During the study, researchers were delighted to discover a population of rusty patch bumble bees!

Rusty patch bumble Bees are listed as an Endangered Species. Wisconsin is one of only nine states where the rusty patch bumble bee still exists.



Saturday, October 19, 2024

Socializing & Snacks at 12:30pm

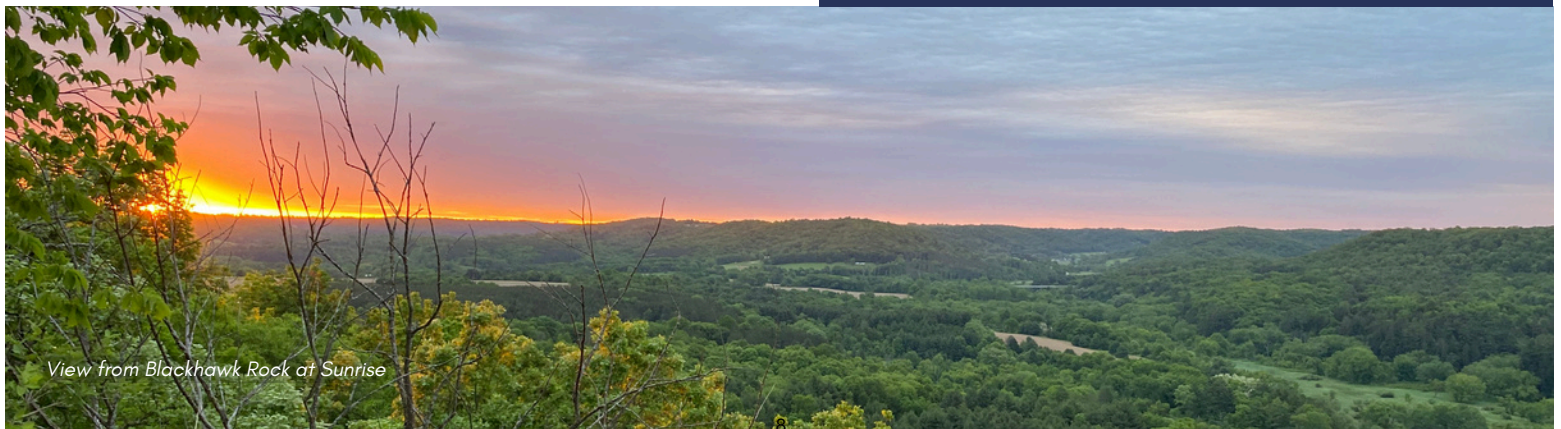
Talk at 1pm

A guided tour of a surveyed area will follow the talk. Tour uses the Visitor Center Trail and is 0.4 miles and is handicap accessible.



Kickapoo Valley Reserve Visitor Center
S3661 State Road 131, La Farge, WI

Free talk made possible by Friends of Kickapoo Valley Reserve



View from Blackhawk Rock at Sunrise

WHAT'S HAPPENING

SUPPORTING THE KICKAPOO VALLEY RESERVE

Thank you to our Dam Challenge Sponsors!



- Friends of Kickapoo Valley Reserve
- Organic Valley
- Cowboy David's Bakery
- EMBARK
- La Farge Lions
- Hillsboro Equipment
- Ho-Chunk Nation
- The Richland Hospital
- Wonderstate Coffee
- Zzip Stop
- Driftys Canoe Rental
- Aramark
- La Farge Volunteers, Inc.
- WI Challenge Academy
- Broken Spoke Bicycle Repair
- WI-ARES/RACES SW District Communications Incident Response Team



- Titanic Canoe Rental
- Vernon Memorial Healthcare
- Farmers State Bank
- Vernon Electric
- Vernoncom
- Viroqua Food Coop
- Rustic Ridge Coffee Lounge
- Riversend Ontario
- Turkey Ridge Organic Orchard
- Hillsboro Brewing Co.
- Vernon County Sherriff Department
- Village of La Farge



- Bank of Ontario
- Viroqua Wal Mart
- Driftless Cafe
- Pasture Pride Cheese
- Nature Nook Retreat
- Soulful Saunas
- Kickapoo Hardware & Merchantile
- Old Country Cheese
- Quality of Life Chiropractic
- Hansen's IGA
- Town of Stark



Pasta Supper: October 4, 2024
Race Day: October 5, 2024

This year marks the 22nd running of the Kickapoo Reserve Dam Challenge Triathlon which brings hard-core athletes and just-for-fun athletes out to ply their skills paddling, pedaling, and running for fun and competition.

The Reserve's scenic beauty and rugged countryside beckon adventurers of all ages to participate in this great event!

All proceeds go to support stewardship project and education opportunities sponsored by the Kickapoo Valley Reserve. Music, vendors, food, and beverages add to the fun. A pre-event homemade pasta supper is sponsored by Friends of the Kickapoo Valley Reserve running from 5-8 PM on the 4th. All are WELCOME!

Join the FUN

Register online to participate. Volunteer to help. Sponsor with your business support.

Sponsor!

Race!

Volunteer!



PROTECTING THE NIGHT SKY

AFTER DARK IN THE KVR

Dark Sky Lighting at the Reserve

by Scott Lind - KRMB Board Member and Dark Sky Advocate

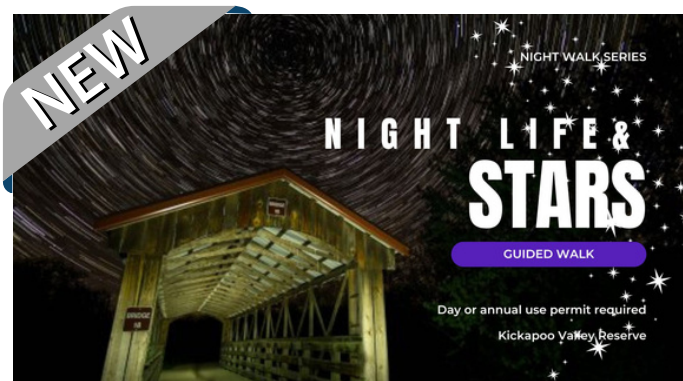
Between 2021 and late 2022 the Kickapoo Valley Reserve modified, at almost no cost, 23 outside lights with warmer, lower output, more efficient LED lamps and improvised the addition of full-cutoff shielding. The goal of these changes was to reduce light pollution and achieve certification as an International Dark Sky Park in cooperation with Tunnelville Cliffs State Natural Area and Wildcat Mountain State Park. Unfortunately, over that same time period the sky brightness above the three properties increased by an average of 57%. In case you think that might be a typo, it's not. That's fifty-seven percent. What once was dark enough, is no longer.

You may ask; how is that possible? It's a direct result of replacement of warmer color high pressure sodium lighting on buildings, on streets and in parking areas with blue-spectrum-containing LED fixtures in many surrounding communities. Lighting from quite distant locations - up to 100 miles away can impact the night sky at the Reserve. Worldwide the increase has been about 10% per year, every year, for the past decade.

How do we return to darker skies? We replace the blue-rich LED fixtures with warm-color LEDs in all our communities. They are more available than ever and have nearly equal efficiency to the blue-rich types. We also need to add controls to more lights to dim or turn them off entirely when not needed. Here at the Reserve, the [Friends of KVR](#) have graciously committed funds to do a more complete retrofit on our outdoor lighting. This will include much warmer color lighting and add controls to reduce the amount of light shining when not needed.

The purpose of this new project is to be visible leaders on this issue by further reducing our light pollution impact and setting an example of what's possible. The [Kickapoo Valley Dark Sky Initiative](#) is leading the effort to educate all decision makers on ways to do better outdoor lighting. We at the Reserve are stepping up to assist their efforts to bring dark skies back to the Kickapoo Valley and beyond.

We hope you'll seek more information and get involved in the Dark Sky effort! Check out the Get Involved page of this newsletter for resources.



Night Life and Stars

Guided Night Walk Series

Fall is a great time to enjoy KVR dark skies and the beauty of our prairies and marshes. Sunset comes earlier each week so no need to stay up late to enjoy the sunset and stars.

Join Master Naturalist Susan Cushing exploring the fall evening from sunset into the starry night. Look and listen for the animals and birds at home in the dark. Find planets, galaxies and falling stars, watch for the International Space Station (we always wave at the astronauts) while strolling along the Old 131 Trail. Our October walk features a full moon rising.

Learn about twilight, current migrating bird information, where falling stars come from, what to see in the September night sky, what the coyotes are doing out in the hills this time of year, and more. Bring your curiosity and dress for the weather.

Remember to keep our skies dark and starry by turning off your outdoor lights, or put them on a motion sensor or a timer. All the critters and birds appreciate that, it's safer and saves money too.

DATE & TIME: Friday Sept 20 at 7:15pm and Thurs Oct 17 at 6:45pm.

WHERE: Gate at south end of Old 131 Trail
Walk is approximately 1 ½ hours, on a paved trail.

GET INVOLVED

HOW YOU CAN MAKE A DIFFERENCE

Lights Out for Migration

"Every spring and fall, billions of birds migrate through the US, mostly under the cover of darkness. This mass movement of birds must contend with a dramatically increasing but still largely unrecognized threat: light pollution." – Birdcast.info

[Learn more about the Lights Out Program here.](#)

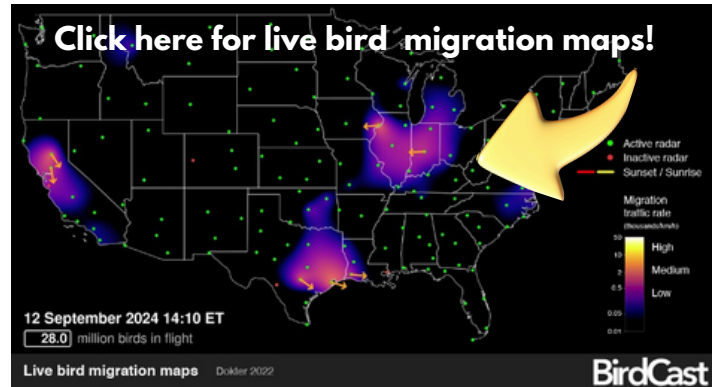


Fall into Pollinator Protection

- Leave the leaves – leaves provide insulation and protection to overwintering pollinators.
- Leave plant stems and brush in your garden. These are nesting sites for pollinators
- Many bees overwinter in small underground nests. Avoid soil disturbance in the fall and early spring.
- Consider adding spring ephemerals like bellwort and bird foot violets, favorites of native bees in the spring.
- Avoid pesticides
- Plant cover crops like partridge pea (bumble bees love it) and sunflowers to provide additional protection over winter.



Rusty Patch
Bumble Bee on KVR



CALL TO ACTION

In the last 3 years alone, the amount of light pollution in the Kickapoo Valley has increased beyond admissible levels required to sustain a dark sky park. Together, we can reduce this light trespass by using appropriate outdoor lighting and encouraging our local communities and businesses to do the same. Please consider your part in this community wide conservation effort.

Learn how KVR and our conservation partners are protecting dark skies:

<http://kvr.state.wi.us/Natural-Features/Dark-Sky>

Dark Sky Conservation resources you can use to take action:

- Watch the Driftless Dialogue: [Protecting our Dark Skies](#) – Scott Lind
- Visit this website: [Dark Sky International](#) for information and how to guides on responsible outdoor lighting.
- Like, follow & share the [Kickapoo Valley Dark Sky Initiative Facebook page](#).



PRESERVING AND PROTECTING

Kickapoo Valley Reserve
S3661 State Road 131
La Farge, WI 54639
608-625-2960
kickapoovalley.wi.gov



Kickapoo Reserve Management Board

Management of the Kickapoo Valley Reserve is under the Kickapoo Reserve Management Board (KRMB), a state-sanctioned Board. The majority of its members are local people, thereby assuring that board decisions represent the diverse interests of the people of the Kickapoo Valley. The Executive Director carries out the KRMB decisions and handles day to day operations.

Management decisions affecting the Reserve are driven by an agreement developed jointly by the State of Wisconsin and the Ho-Chunk Nation. "The Reserve will be preserved in a natural state and developed only to the extent necessary to enhance outdoor recreational and educational opportunities."

KRMB Board Members

Chair - Travis Downing
Vice Chair - Barb Sarnowski
Secretary - Luke Zahm
Member - Bill Quackenbush
Member - AJ Mann
Member - Kjetil Garvin
Member - Joel Charles
Member - Reggie Nelson
Member - Dave Maxwell
Member - Julie Hoel
Member - Scott Lind

